

# Japan

Colton Koosman

Chris Mantei

# Technology

The Samurai had many weapons and they used common tools as weapons. Same as the ninja.

# Samurai Weapons

Women from Samurai families were trained to use weapons as well the kanzashi is a hair ornament that women would wear, but it was a lethal weapon.

# Katana

The most common sword that the Samurai used was the Katana it was considered the Samurai's soul at the time.



# Kabutowari

The Kabutowari sword was also known as the helmet or skull breaker for a reason. This sword's blade was a lethal weapon its edge was designed for cutting helmets of an opponent in half. The Samurai would carry this weapon at their side.



# Kanabo

The Kanabo is another lethal weapon, it was a wooden club that had spikes or studs in it. It was a very heavy weapon so they had to be very skilled to wield it and to have very good balance.



# Kiseru

The Kiseru or a tobacco pipe was also an emergency weapon the rod would have metal ends, and in emergency self-defense weapon could be used by thrusting it or jabbing it into the enemy.



# Kogatana

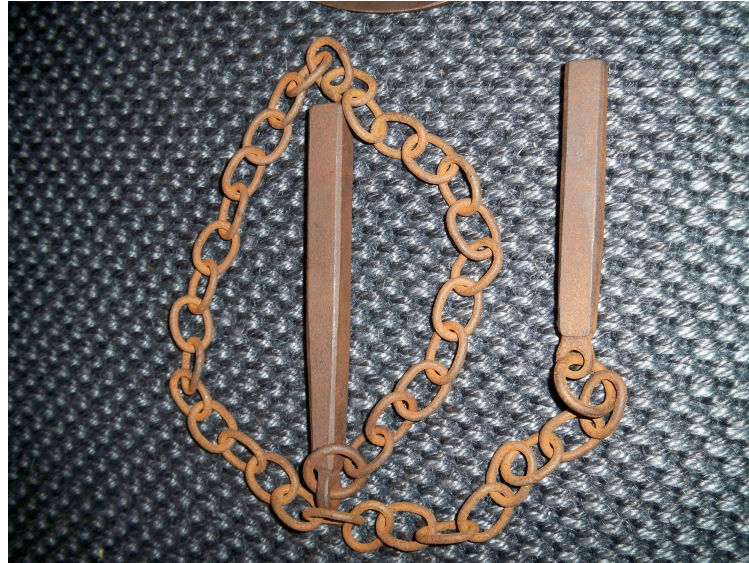
The Kogatana is a small utility blade that is carried in a little slot near the top of the scabbard or known as tanto. Samurai used it as a general purpose knife or a dagger, it was also used as throwing knife.





# Kusari-Fundo

The Kusari-Fundo was a weapon that had a short chain with steel weights attached on both sides. Its length was about 2 to 3 feet long. It was a multi purpose weapon but it was used to counter an opponent's sword without the Samurai using a sword.



# Jitte

The Jitte was a long steel rod with a handle it has hooks attached to its blade so the could disarm an enemy and capture them alive.



# Norimitsu Odachi

The Norimitsu Odachi is an extremely long sword it is 12.37 feet long and weighs 31.97 lbs. Swordsmiths that made Odachi's they came in many different lengths. The sword if carried by a soldier on foot would carry it on their back but it was not easily accessible.



# Ninja weapons

The next few slides will tell about what the ninjas used for weapons.

# Shuriken

The shuriken is a thinner piece of metal with blades that would rotate when it was thrown at its enemies. It is also known as the throwing star.



# Ashiko

Ashiko is what the ninjas used for climbing. It was a piece of metal with three prongs and string so that they could tie t on quickly and escape.



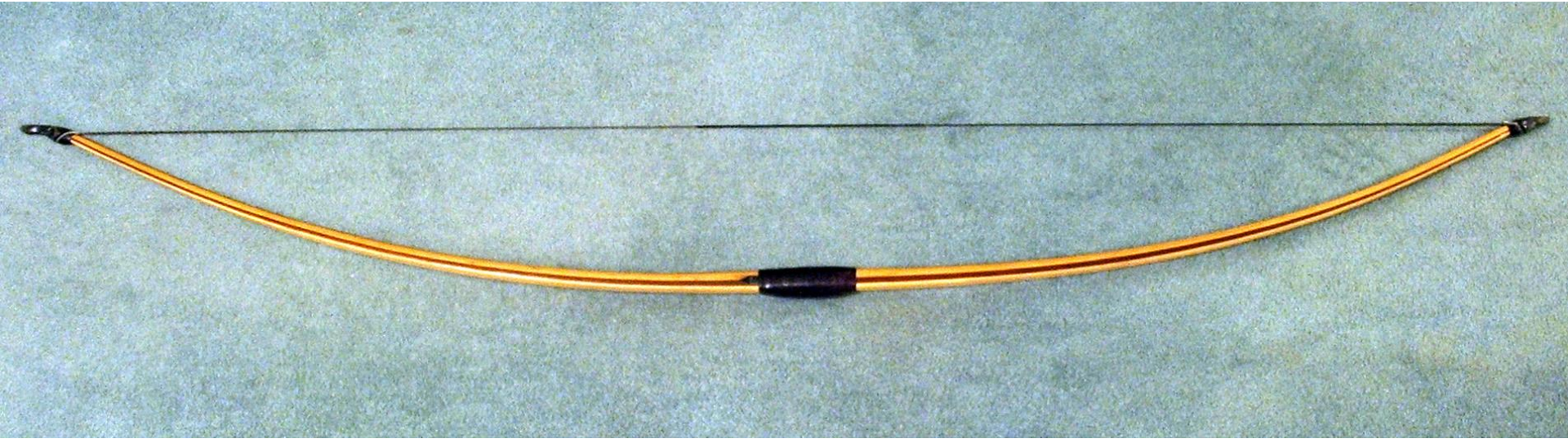
# Tetsu Bishi

The tetsu Bishi is like little jacks but sharp and pointy. They would throw them on the ground so they could escape. They were sometimes laced in poison so that when the enemy stepped on them they would die from the poison.



# Bow

The bows were used for assassination and hunting. They say that the female ninjas favorite weapon was supposedly the bow.





# Nekote

The Nekote was like brass knuckles except they were claws. They were also laced with poison most of the time. The female ninjas used these as well.



# Kunai

The Kunai was a very useful weapon to anybody that wielded it. It was a dagger with multiple purposes, it was used for spear points, climbing, throwing, and prying things open.



# Kama

The Kama was originally used as a tool for harvesting crops. Since a main part of the ninja came from farming communities they made use of what they had.



# Religion

The japanese people have two major religion beliefs.

# Shinto

Shinto is one of the oldest forms of religion that they believe in.

# Amaterasu

Amaterasu is the goddess of the sun, and their universe.



# Hachiman

Hachiman is the god of war, he also resembles military arts.



# Tenjin

Tenjin is the god of education. He also is the god for literature, and scholarship.





# Buddhism

Buddhism is the other major religion that they believe in.

# Tsongkhapa

Tsongkhapa is the founder of the last of the four main schools of Tibetan buddhism.



# Padmasambhava

Padmasambhava is also known as Guru Rinpoche, he is historically tangible founder of the oldest school.



# Tara

Tara can be many different colors such as green, white, blue, red and yellow. She is considered a great protector. She protects people from pride, delusio, anger, jealousy, wrong views, greed, desire and doubt.

# Political

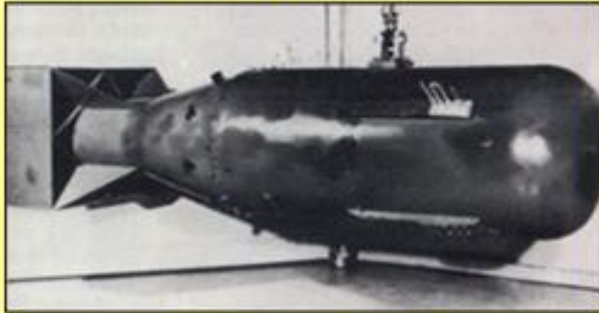
Why did the Japanese bomb Pearl Harbor? Japan attacked Pearl Harbor because they wanted to be one of the superpowers like the United States. The attack brought us into World War II. Where the manhattan project started, that's when little boy and fat boy were made.



# Political

Towards the end of World War II the Americans attacked Hiroshima. The Americans dropped their first ever atomic bombs. The effects of little boy and fat man were so devastating that the Americans have not dropped another atomic bomb since. The death total was originally 140,000 people but that number increased significantly to 202,118 people died.

**Little boy : Hiroshima**



Fission uranium-235  
Weight : 4400 kg  
Power : 15,000 tons of TNT

**Fat Man : Nagasaki**



Fission plutonium-239  
Weight: 4535 kg  
Power : 21,000 tonnes de TNT



# Environment

The environment of Japan is subtropical. In the summer it is very hot with high humidity, and the winters are mild. It consist of four seasons as well. Most of japan is covered in mountains and forests. It is surrounded by the ocean as well.

# Sites

<https://www.ancient-origins.net/artifacts-ancient-technology/samurai-weapons-0010730>

<https://taiken.co/single/a-guide-to-ninja-weapons/>

<https://theculturetrip.com/asia/japan/articles/7-shinto-kami-youll-meet-in-japan/>

<https://www.japan-guide.com/list/e1000.html>